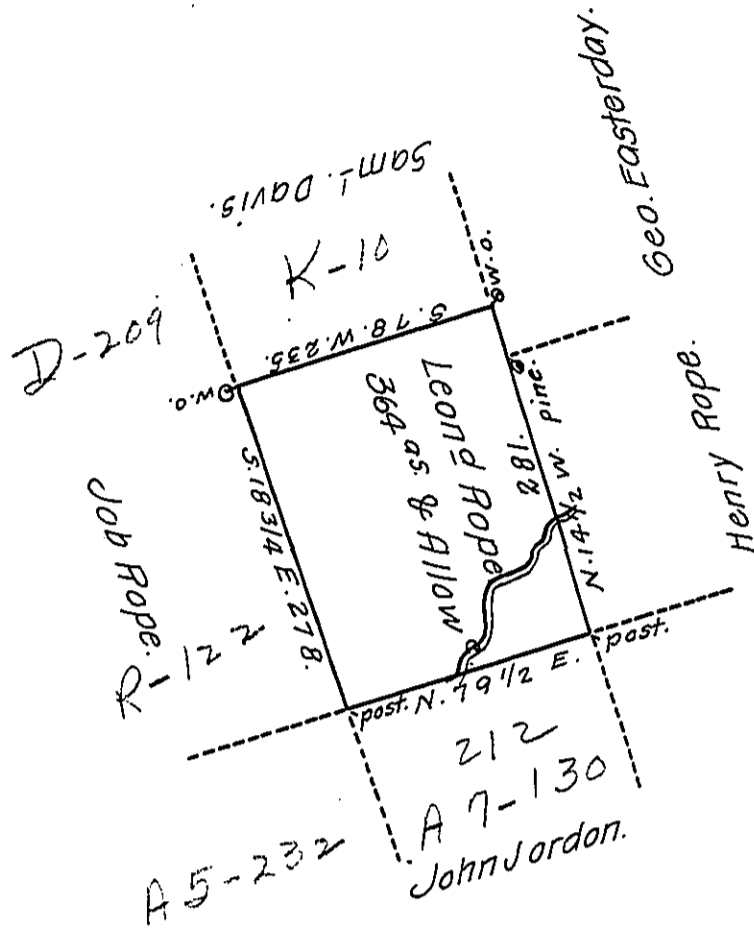


Sug. Loaf -
Luzerne.



A draft of a tract of land called — Situate on Black Creek — in the County of Northum^d containing three Hundred & Sixty four acres & allow^e surveyed for Leonard Rope the 5th. day of October, 1793 by Virtue of a warrant dated the 13th. day of June, 1793.

To

Daniel Brodhead, Esq^r,
Surv^r Gen^l.

by

Wm. Gray, D.S.

IN TESTIMONY that the above is a copy of the original remaining on file in the Department of Internal Affairs of Pennsylvania, made conformably to an Act of Assembly approved the 16th day of February, 1833, I have hereunto set my Hand and caused the Seal of said Department to be affixed at Harrisburg, this twenty seventh day of October, 1911.

Mary Howe
Secretary of Internal Affairs.